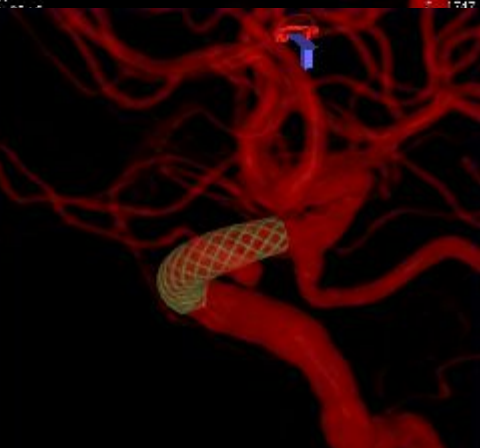
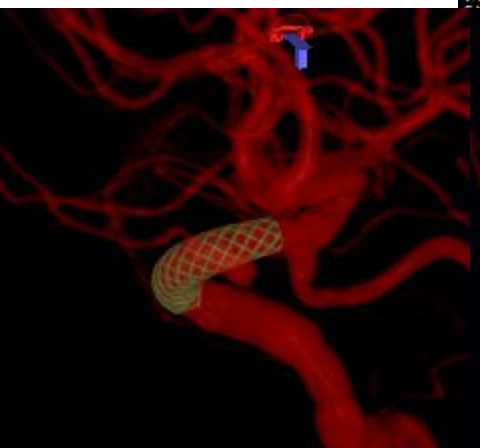
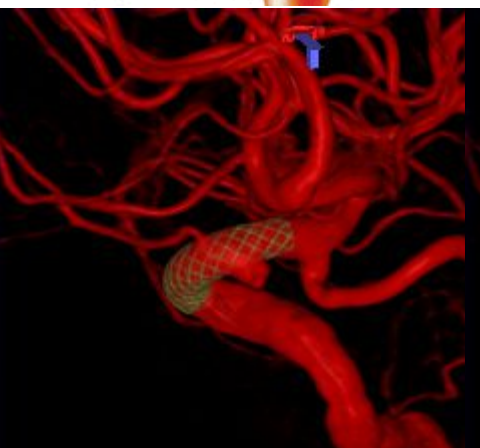
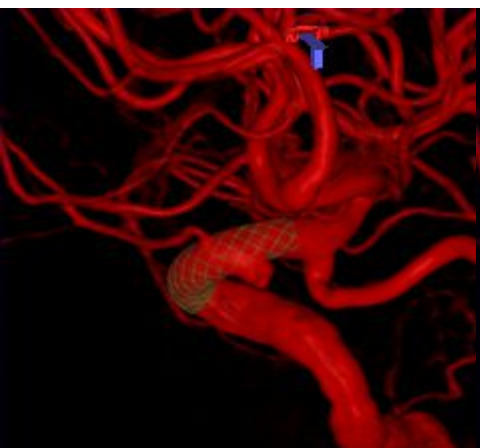
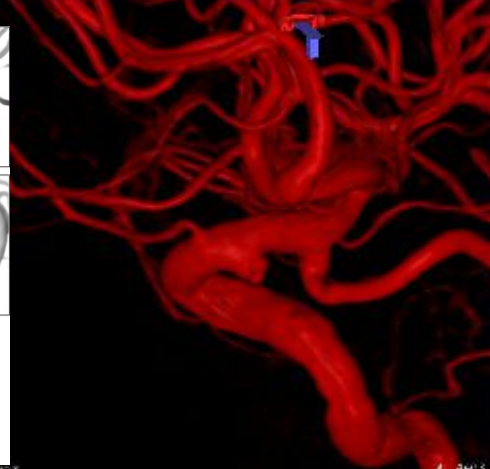
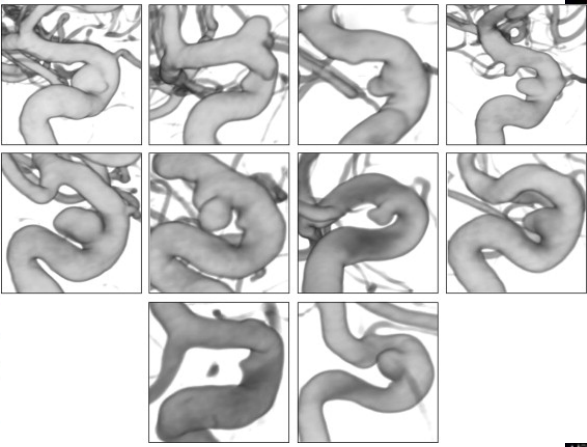
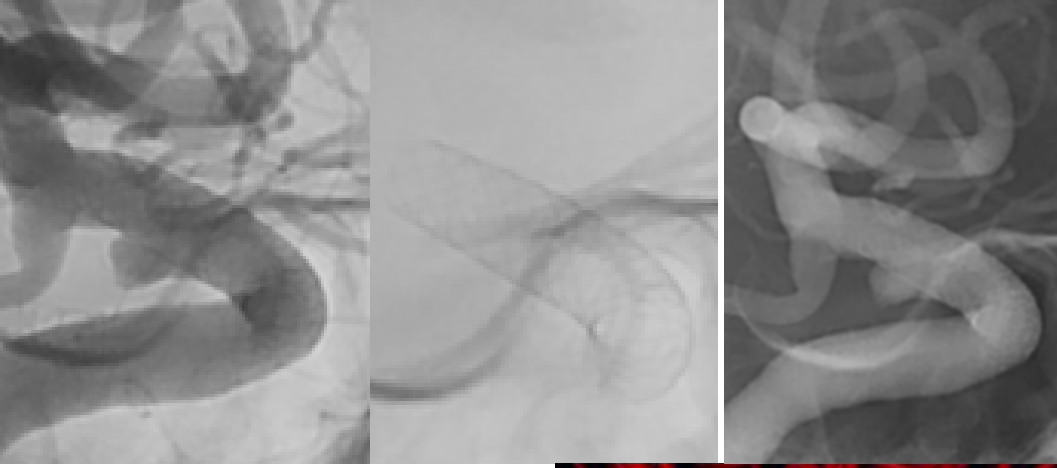
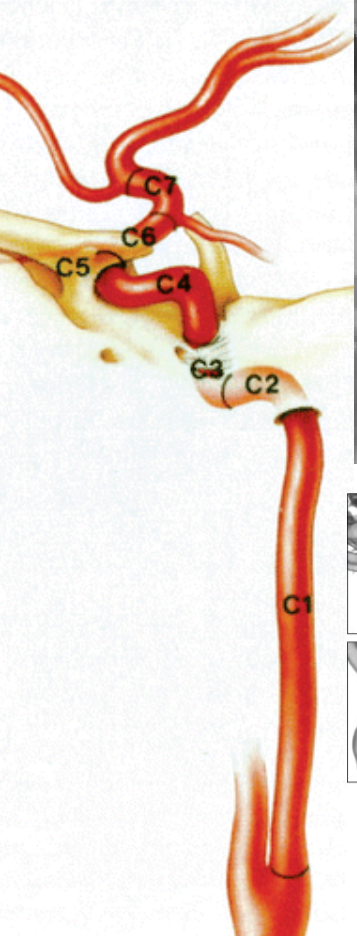


Aneurismas incidentales del segmento paraoftálmico-TTO Flow-diverter

Aneurismas incidentales del segmento paraoftálmico de la arteria carótida interna.
Tratamiento Surpass streamline 4 mm x 20 mm.

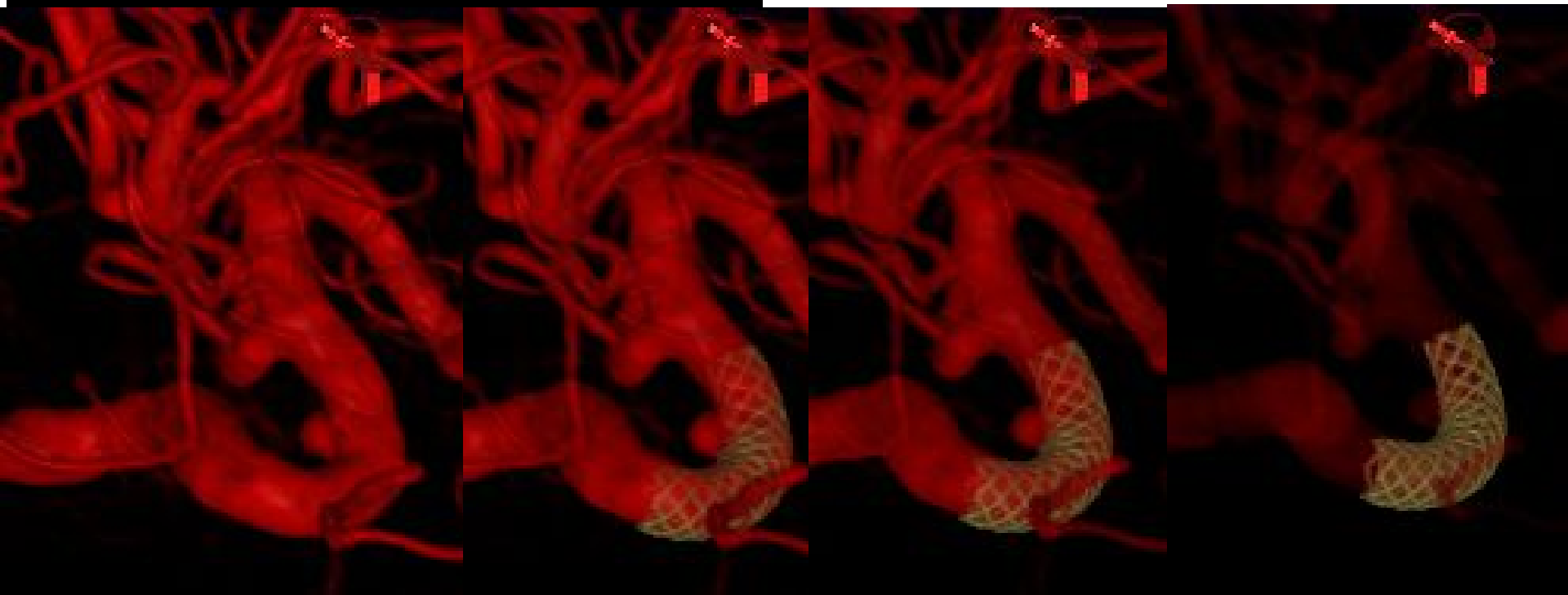
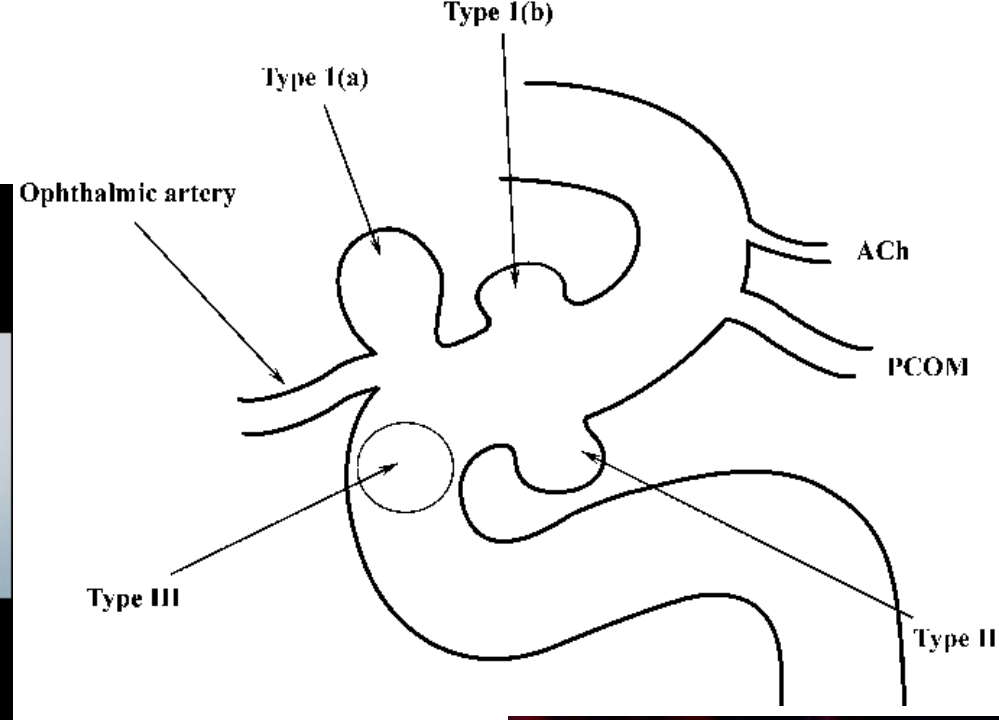
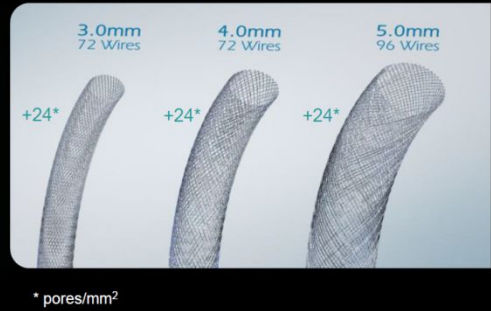


Aneurismas incidentales del segmento paraoftálmico-TTO Flow-diverter.

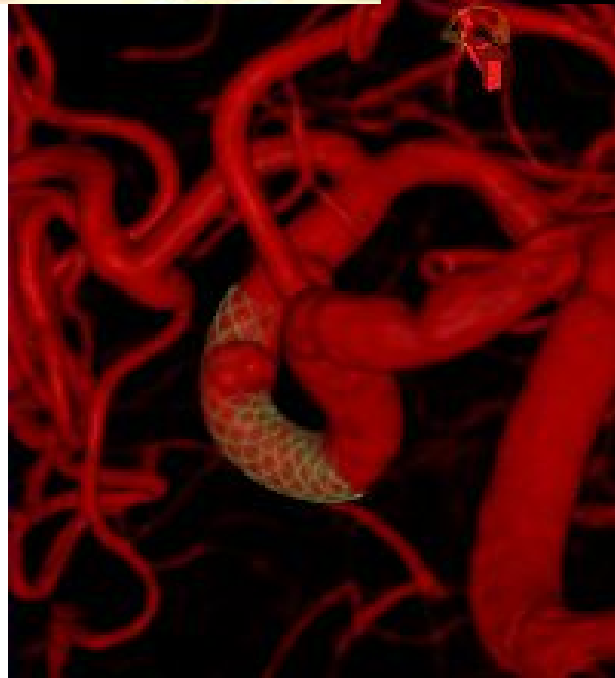
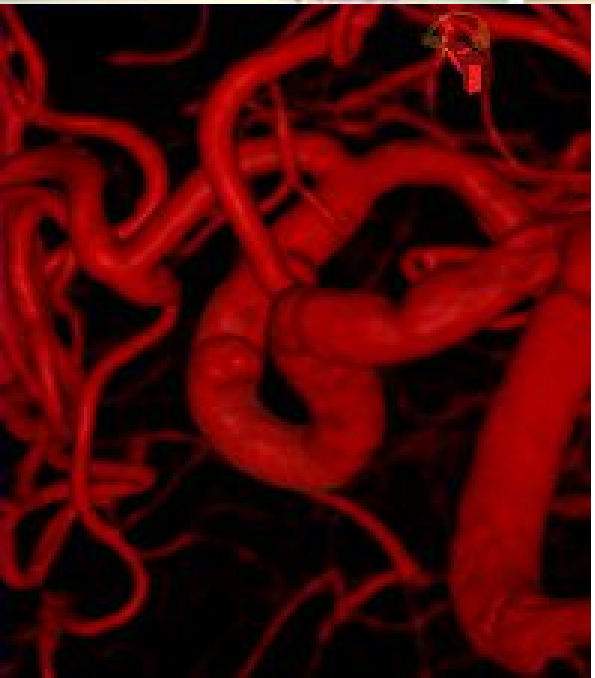
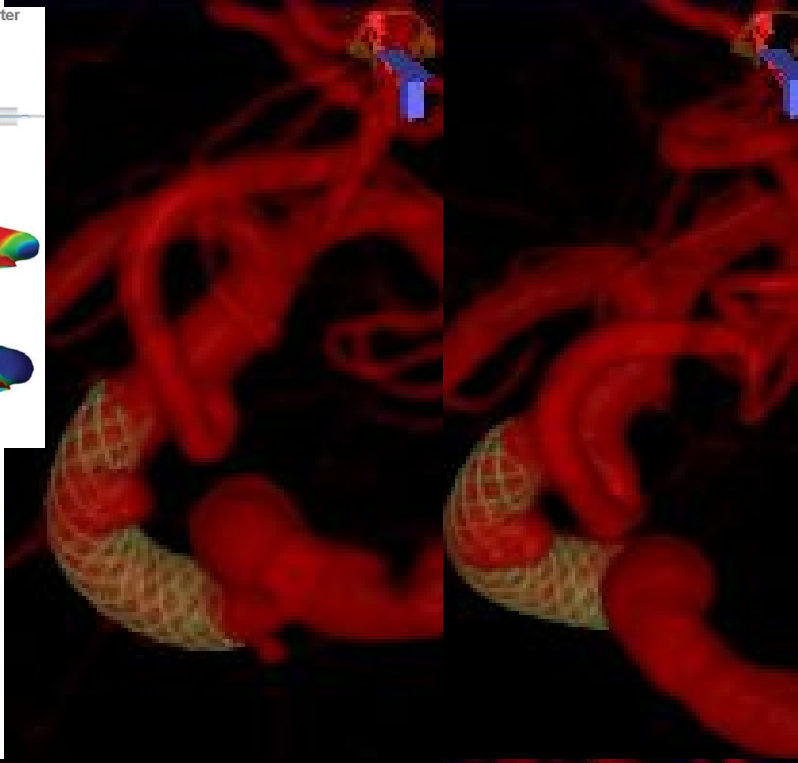
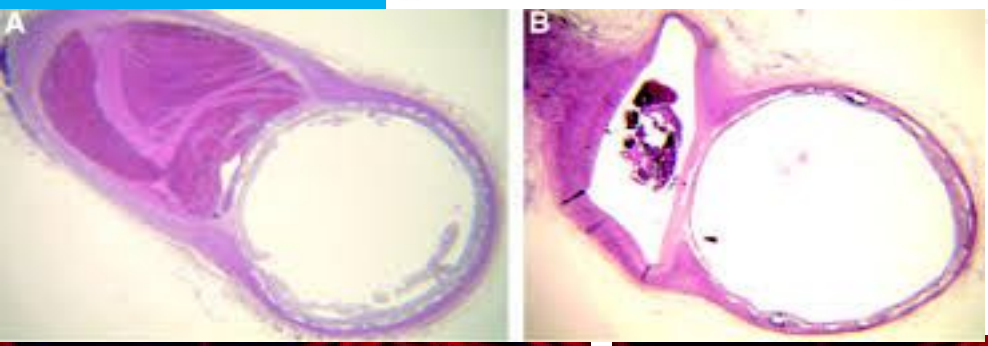
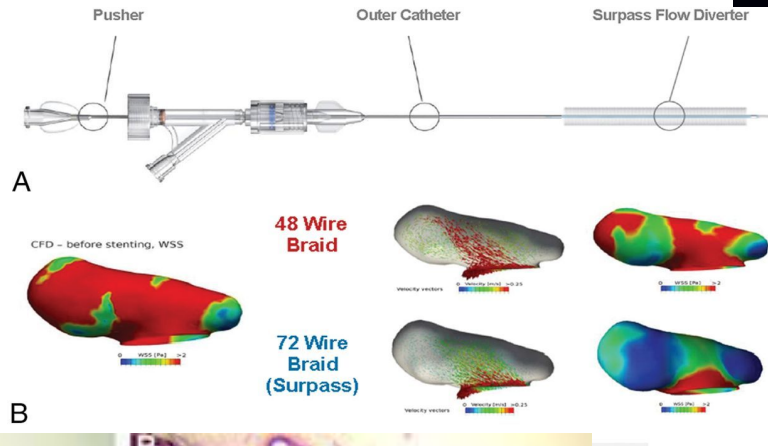
Flow Diversion

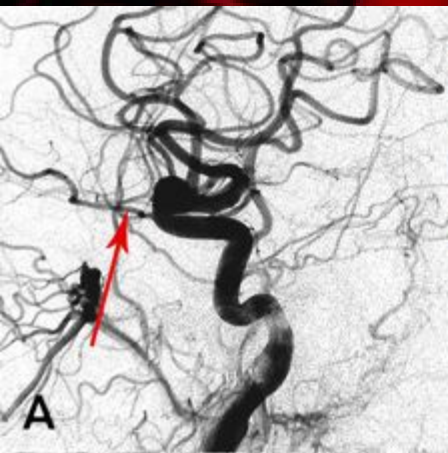
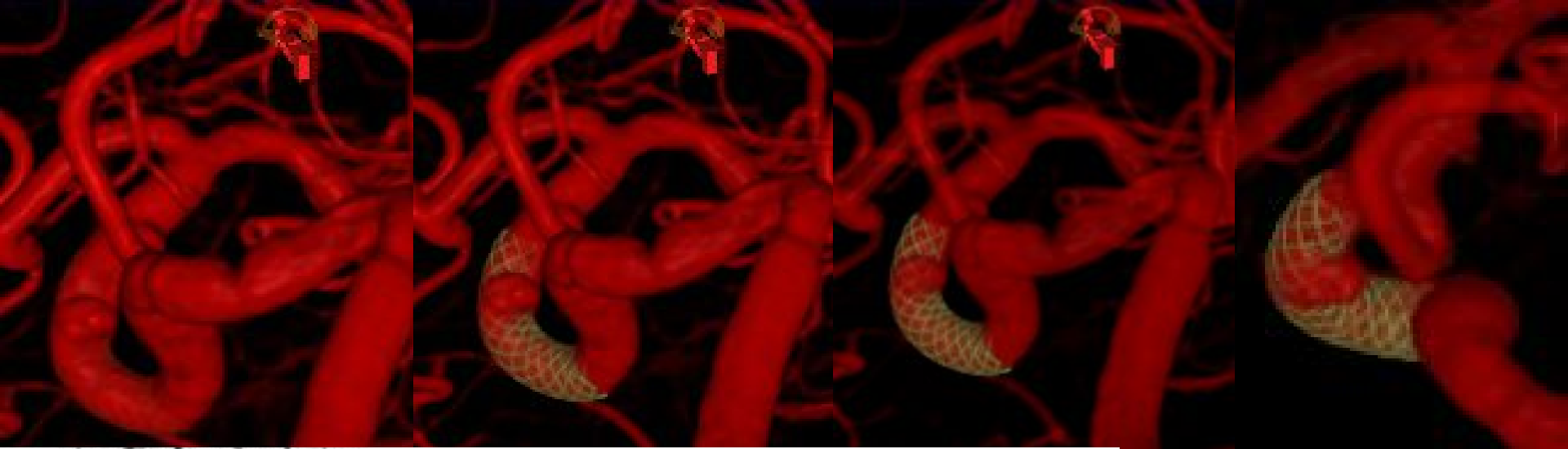
Consistent Mesh Density = Consistent Occlusion

- With the Surpass™ Flow Diverter, the number of braid wires increases with an increase in device diameter
- Result** = Consistent Mesh Density across a range of vessel sizes

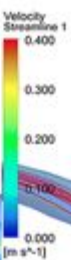
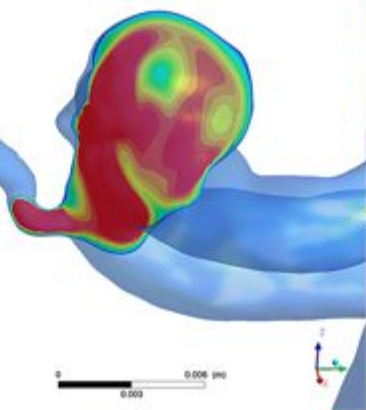


Aneurismas incidentales del segmento paraoftálmico-TTO Flow-diverter.

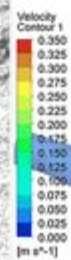
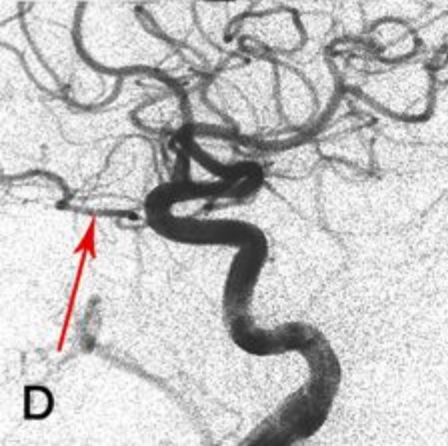
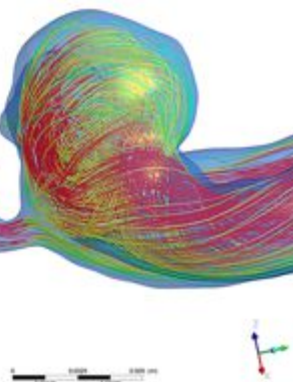




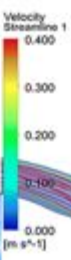
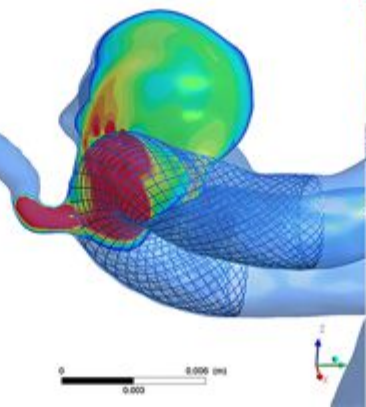
B



C



E



F

